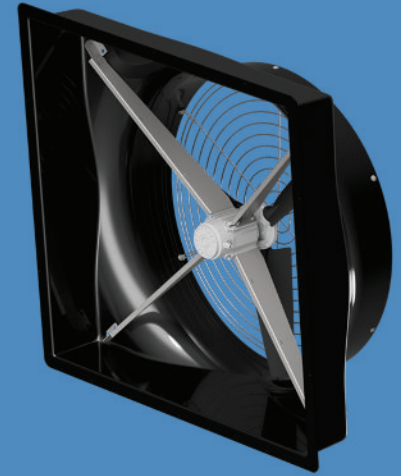
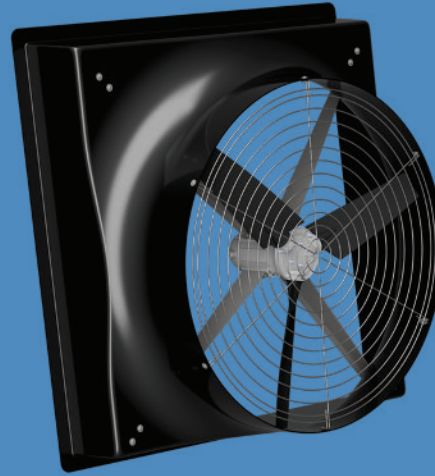
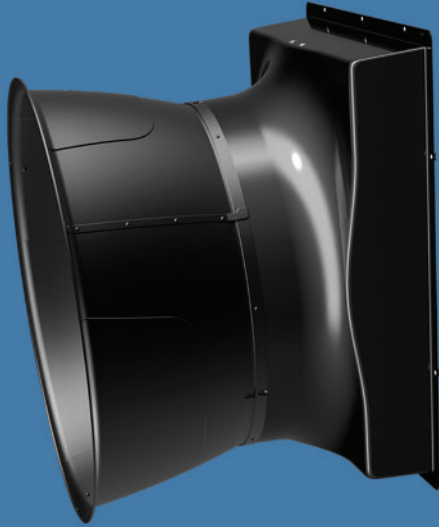




Direct Drive Wall Fan 54in EC



| Fan Size | Model # | Drive type | Housing Material | RSO | HP/KW | Volts | FLA | PHASE | CFM@.10SP |
|----------|---------|--------------|------------------|-------------|-----------|-------|-----|--------|-----------|
| 54in | FW-54EC | Direct Drive | Fiberglass | 64"W x 64"L | 3hp/2.2kw | 230V | 10 | 1 or 3 | 28,300 |

Direct Drive 54in Wall Fan EC

- ECM Motor results in best in class efficiency and performance
- Aerodynamic fiberglass Housing funnel encourages free air flow.
- Variable Speed uses a 0-10v signal eliminating the need for costly VFDs, and giving you precise control of your environment
- Direct Drive operation results in very little maintenance, no belts, bearings or shafts
- A complete line of accessories is available, Winter Covers, Fan Covers and Cone
- Roll seal shutter is optional with this model



FS-54



WC-54



FC-54

